



2 Working With Project Files

Managing Test Data With Project Files

This chapter helps you to work with project database files. In CMS Pro, the File menu features commands to create, save, open, merge, import, export, and print project database files. You may also enter or edit project information such as project title and customer and user addresses. For additional information, see the online Help.

NOTE: Wavetek recommends storing Project databases and files in a directory other than \CMSPRO. This will minimize disk errors relating to fragmentation and other drive related potential problems. Database programs utilize extensive disk access under normal operation. By separating your data files from the operating program, you will help ensure the integrity of your test results data.

You may need to create a directory for your projects before you enter CMS Pro for Windows. This can be accomplished using the Windows File Manager (found in the Main program group). If you have already invoked CMS Pro, use the Alt+Tab keys to switch to the Program Manager and start File Manager from there. The Alt+Tab operation can also be used to switch back to CMS after your project directory has been created.

Creating a New Project

Use the New Project command to create the project data structures and organizations used to manage data. The New Project command creates a directory to store files uploaded from the LANTEK PRO. New Project also creates a project database to hold data about the cable plant project and provide associations between cables and test results.



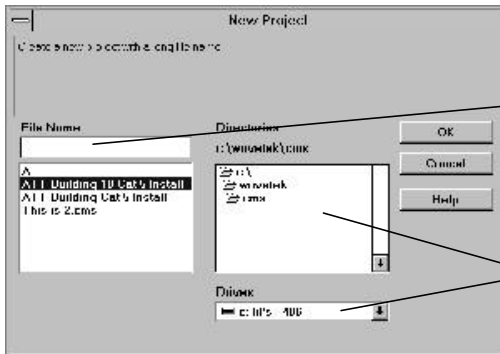


Click here to start a New Project...



To start a New Project:

1. From the File menu, select New Project...(or click the New Project button on the toolbar).
2. The New Project dialog box appears.
3. In the File Name box, type the title of the new project.
4. Select a path and directory name for your new project from the Directory list. *Do not use the \CMSPRO directory. See note at the beginning of this Chapter.*
5. Choose the OK button.



Type your project's title in the File Name box

Select the drive, directory, and path where you want your new project located

The Main Window and grid appears with your new project's name. You can import data from the LANTEK PRO handset (see later in this section, "Importing Data for the PRO Handset").





Choose Open Project... to open an existing project

Opening an Existing Project

You can open a project you recently worked on by choosing it from the list of project files in the Open Project dialog box.

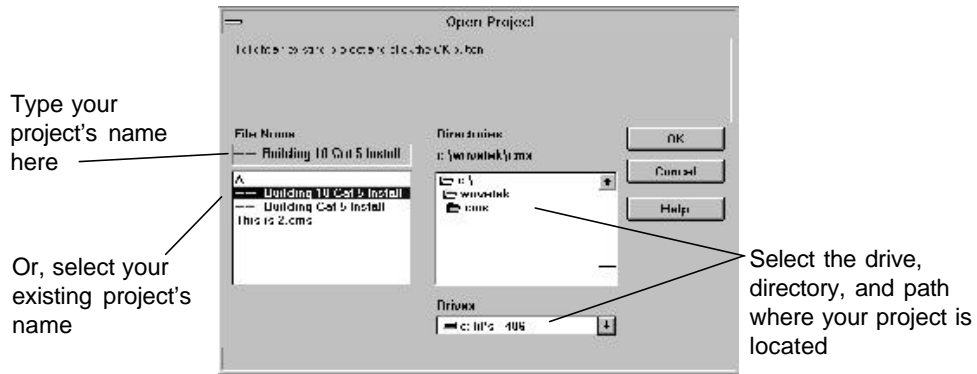


To open an existing project file:

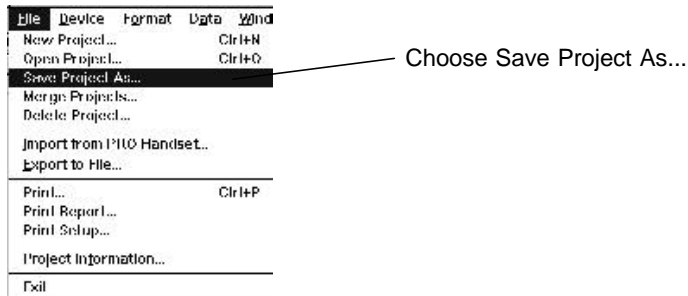
1. From the File menu, select Open Project...(or click the Open Project button on the toolbar).
2. The Open Project dialog box appears.
3. Select the drive and directory where your project is located.
4. A list of all project names appears in the projects list box.

A project may be opened in one of two ways:

1. Double click on the project name in the list box.
2. Click once on the project name. The project appears in the the Open Project box. Click OK.



Your existing project appears in the Main Window grid.



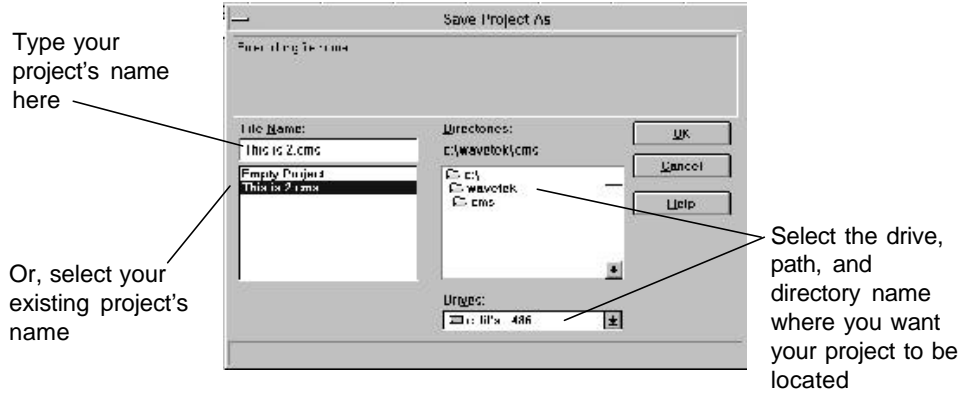
Saving a Copy of a Project

When you open a project, CMS Pro copies it from disk and displays it on your screen. As you make changes to a project, the changes are automatically saved. You can create a duplicate of a project at any time by selecting Save Project As...

To save your project:

1. From the File menu, select Save Project As...
2. The Save Project As dialog box appears.
3. Select the drive and directory where you want your project to be saved.
4. A list of all project names appears in the projects list box.



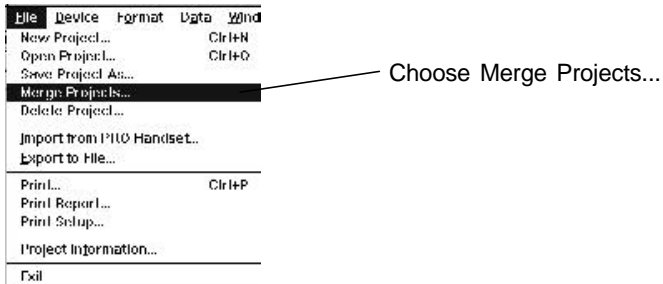


A project may be saved in one of three ways:

1. Double click on the project name in the list box.
2. Click once on the project name. The project appears in the the File Name: box. Click OK.

NOTE: The new saved project does not remove the existing project that you clicked. You create a new project with the same description as the one you clicked, but the project data is from your currently open project.

3. Type a valid project name into the project text box and click OK.



Merging Projects

You can merge the records of the currently open project with those of a saved project. Additionally, you can specify how the user-defined fields are merged with the current project.

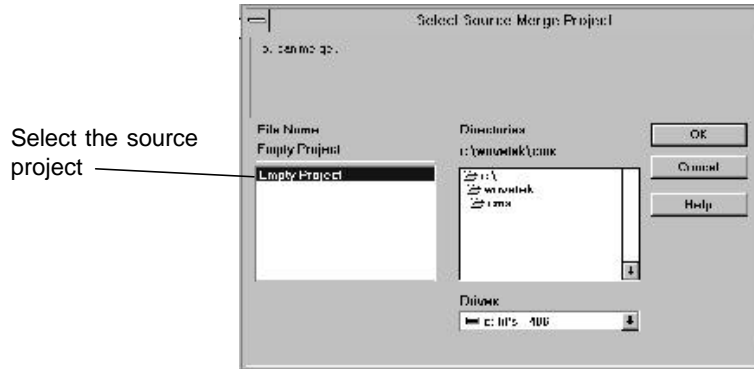
To merge two projects:

1. From the File menu, select Merge Projects...
2. The Select Source Merge Project dialog box is displayed.

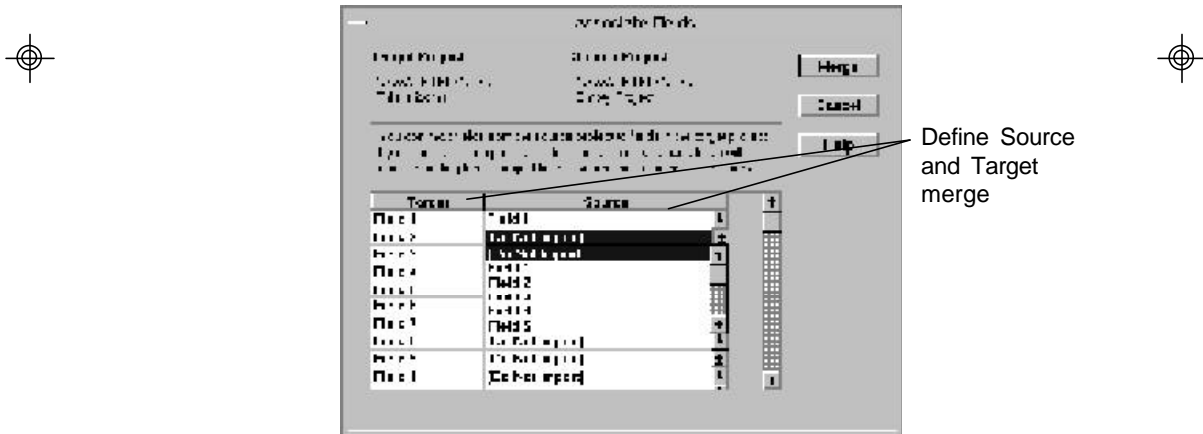




3. From the File Name list, select the name of the project you wish to merge from.
4. Click OK.



5. The Associate Fields dialog box is displayed.



The Associate Fields screen allows you to define which fields from the source project will be merged into the target (currently open) project. For example, you might only want Field 1 from the Source Project to be merged into the Target Project. To do this, you would select Do Not Import for Field 2 through Field 32.

6. Define which fields from the Source Project will be merged into the Target Project.
7. Click Merge.
8. The defined fields are merged, and you are returned to the main window.





Importing Data From the LANTEK PRO Handset

To import data, make sure that the LANTEK PRO display handset is connected to a serial port and the port is configured for the correct baud rate. (Configure your serial port through the Device menu.)



Choose Import From Pro Handset...



Verify your LANTEK PRO connection, then click OK



To import from the LANTEK PRO handset:

1. From the File menu, select Import From PRO Handset...(or click the Import button on the toolbar).
2. A message appears, asking you to verify your LANTEK PRO serial connection.
3. When ready, select OK. If the settings are incorrect, select "Cancel" and then "Configure Serial Port" from the Device menu.
4. The Import command will begin uploading the directory of tests stored in the LANTEK PRO.
5. A message box showing directory upload progress is displayed.
6. Once the directory upload is complete, the list of test data files that can be imported from the PRO handset will appear in a dialog box.
7. Drag and drop files to the box on the right, then select the Import button.

